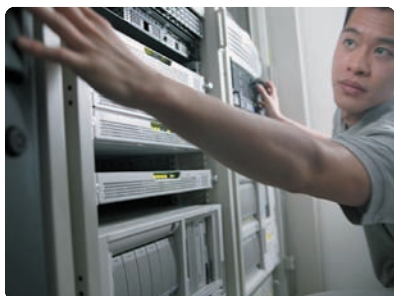


WD Raptor® SATA Hard Drives

1.2 Million Hours MTBF
World's Fastest SATA Drive
5-year Limited Warranty



World's fastest and most reliable SATA drive.

- **Lightning Fast** – 10,000 RPM spin speed, 4.6 ms average read seek time, and 16 MB cache for superlative performance.
- **Unrivaled Reliability** – 1.2 million hours MTBF at 24x7 100% duty cycle, make this the world's most reliable SATA drive.
- **Enterprise-class SATA** – World's fastest SATA drive random I/O performance beats SCSI in most benchmarks.

Built for enterprise environments to match SCSI reliability and performance, WD Raptor 10,000 RPM SATA hard drives provide simplified connectivity at significantly less cost than parallel SCSI drives. With up to 150 GB capacity, 16 MB cache, NCQ and Rotary Acceleration Feed Forward (RAFF™) for state-of-the-art vibration tolerance, WD Raptor offers the best combination of reliability, high capacity, and performance for enterprise applications. Ideal for servers, network attached storage, scientific computing, video surveillance, enterprise backup and digital video.



"Enterprise Disk Drives" Company of the Year
VARBusiness ARC 2006

WD Raptor

SATA Hard Drives

Frequently Asked Questions

What about SATA II – is this a SATA II drive?

SATA II is an industry specification to define those things necessary for compatibility. SATA II has a number of optional features: NCQ, SATA 3 Gb/s, port multiplier, port selector, asynchronous signal recovery, soft settings preservation. All of these features are optional. Instead of labeling a drive as "SATA II," WD clearly and simply states drive features. WD Raptor offers 36 to 150 GB, 10,000 RPM, 16 MB cache, 1.5 Gb/s SATA, and SATA II NCQ. It's important to understand that hard drive performance is dependent on rotational speed and seek time, not wire speed. The 10,000 RPM WD Raptor (at 1.5 Gb/s) outperforms ALL other SATA II (3 Gb/s) drives available today.

Does the WD Raptor offer queuing?

WD Raptor includes SATA II NCQ. Benchmark testing shows that SATA II NCQ improves random I/O workload performance.

How does enterprise SATA compare to SCSI?

Enterprise SATA is proven. Problems related to reliability, performance, and SATA RAID compatibility, have been resolved. Enterprise SATA addresses all major enterprise requirements. SATA is in the mainstream today because it brings SCSI-like performance and reliability at a lower cost.

Is this drive compatible with SAS systems?

Yes, the WD Raptor drive is compatible with SAS systems, including features such as hot plugability and NCQ.

Will SAS replace Enterprise SATA?

SAS systems are compatible with SATA hard drives. For the first time, IT buyers can implement a single storage infrastructure that offers both flexibility and scalability. Its ability to uniquely serve the high-performance needs of the enterprise with SAS drives and also the high-capacity needs with enterprise-class SATA storage allows it to scale flexibly as enterprise needs change. This flexibility, combined with efficiencies provided by combinations of SAS and SATA drives that have common components (cables, connectors, enclosures and backplanes) will allow the enterprise to meet new demand without substantially growing existing IT budgets.

Key Specifications

Interface:	SATA
Form Factor:	3.5-inch
Spin Speed:	10,000 RPM
Cache:	16 MB
Access Time:	4.6 ms
Warranty:	5 years

Capacities

36 GB, 74 GB, 150 GB

Model Numbers

WD360ADFD, WD740ADFD,
WD1500ADFD

